



University of Connecticut

Director of Design, Engineering & Technical Support

Great Opportunity

- Exciting New Position
- Top Public University In New England
- Diversified Design Projects

UCONN is located in Storrs, Connecticut

- 1.5 hours to Boston & Providence
- 2 hours to NYC
- 1.5 hours to Ocean

Connecticut provides a wide variety of cultural and natural resources. The natural resources include rivers with opportunities for canoeing, fishing, white water rafting and leisure boat rides, and over 100 state parks (over 168,000 acres).

As one of the 13 original colonies, CT is a lace work of preserved Early American and Colonial structures and sites. Today, world-class theater, Mystic Seaport and Aquarium, music and art museums contribute to its well-stocked treasure-trove for seekers of cultural pursuits. Connecticut's small size, great diversity of terrain and wide open spaces make it a great place to live and work.

University of Connecticut (UCONN)

Description:

The University of Connecticut is the state's flagship institution of higher learning. Founded in 1881, the University of Connecticut has grown to include 10 Schools and Colleges at its main campus in Storrs, separate Schools of Law and Social Work in Hartford, five regional campuses throughout the

state and Schools of Medicine and Dentistry at the UCONN Health Center in Farmington. UCONN is a Land and Sea Grant public institution and a Space Grant Consortium institution. The University of Connecticut is the University of Choice for academically talented students. **UCONN has stood as the top public university in**

New England for eight consecutive years. The University is undergoing an amazing transformation. UCONN is renewing, rebuilding and enhancing its campuses through an unprecedented \$2.3 billion, 20-year state investment in the University's infrastructure. State-of-the-art facilities grace every campus.



Demographics:

The University of Connecticut is comprised of the main campus located in Storrs with regional campuses in West Hartford, Waterbury, Avery Point, Torrington, Stamford and the UCONN Health Center, located in Farmington, CT. The Uni-

versity spans 4,104 acres at its main campus and five regional campuses, and an additional 162 acres at the UCONN Health Center in Farmington. Total enrollment at all campuses is approximately 28,000 students. The Storrs campus has an enrollment of ap-

proximately 20,000 undergraduate and graduate students, including a resident undergraduate population of approximately 12,000 students. There are approximately 9,000 full and part-time faculty and staff.

AES –Architectural and Engineering Services

The Architectural and Engineering Services (AES) Department, plans, develops, designs and manages the construction of new buildings, various renovations and infrastructure projects for the University and the regional campuses as well as for the UCONN Health Center. The Executive Director of AES reports to the Vice President and Chief Operating Officer of the University. AES is also managing the \$2.3 billion enhancement program known as UCONN 2000/21st Century. AES has three divisions:



1. Project Development & Planning
2. Design, Engineering & Technical Support
3. Project & Program Management

AES is responsible for all master/capital planning, enforcing the permitting process for construction or renovations, and insuring projects are completed as designed and within budget. The department also provides architectural and engineering services for the heating plant, sewer/water plant, infrastructure as well as all facilities which includes 14 million square feet and approximately 600 structures of which about 400 are buildings.

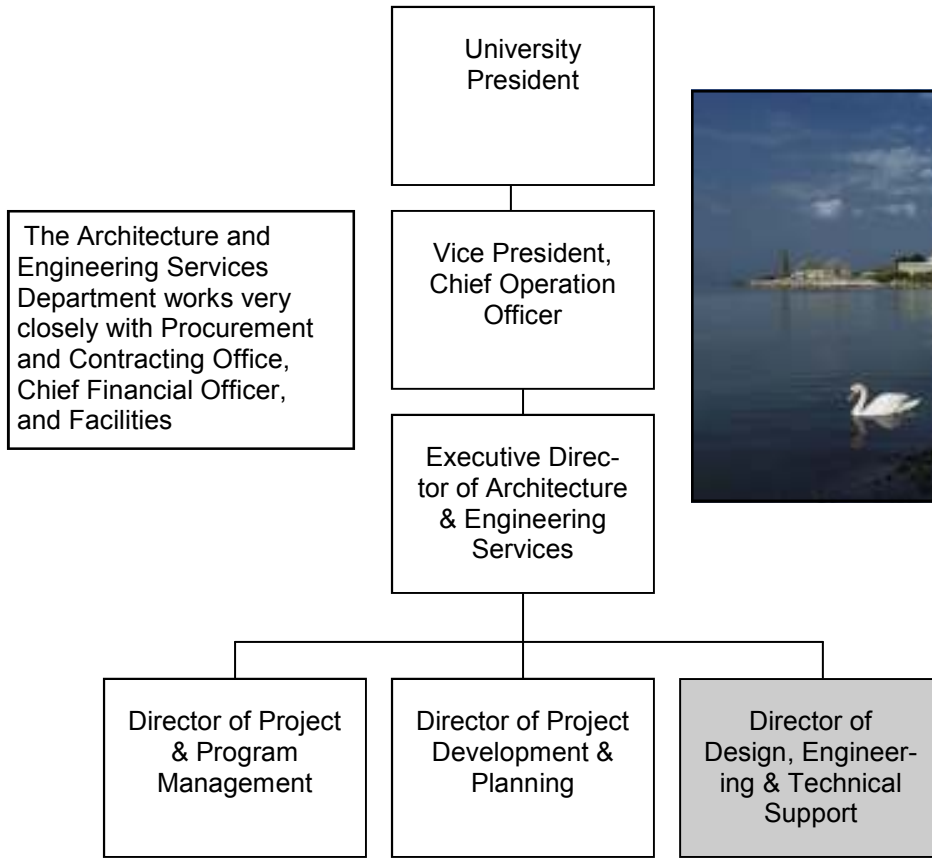
Director of Design, Engineering & Technical Support Position Description

The Director of Design, Engineering & Technical Support is one of three division directors reporting to the Executive Director of AES. The Director of Design, Engineering & Technical Support supervises professional mechanical and electrical engineers and a licensed architect. It is anticipated that estimators and schedulers will also be added to the staff in the future. The Director manages and signoffs on all in-house design work along with overseeing design consultants. The Director is responsible for:



processing all renovation plans from Residential Life Services and Academic Renovations Offices to submit for plan review. The Division works with all user groups to acquire program and facility needs to improve upon designs to meet all requirements. The Division serves as Technical Support to Facility/Plant operations, residential life services and academic renovations to repair and improve existing building operations. The ideal candidate must be a Licensed/Registered Architect or Licensed Engineer (PE) and have a

Bachelor's degree and ten years of progressively responsible experience in construction management, design management, or project management. Candidates should have relevant experience with various projects such as heating plants, municipal services, buildings, sewer/water plants, hospitals, etc.; experience managing professional consultants; an understanding of the public purchasing process and the ability to develop bid specifications.



Characteristics of the Ideal Candidate

- Demonstrated leadership ability
- Positive attitude, flexible, self starter, with a can do attitude
- Ability to be a team leader and a team player to move department forward
- Need to be able to lead change, embrace change and encourage new ideas
- Experience in project control, project management, and/or design management
- Personnel management skills and experience
- Knowledge of building and fire code enforcement procedures and regulations
- Ability to manage a new division and establish standards, policies and procedures
- Knowledge of purchasing procedures, RFP's and the bid process
- Ability to promote excellence from consultants and staff
- Ability to work constructively and interact with user groups, various professionals and staff
- Effective communication, interpersonal and team building skills



Challenges and Opportunities

- To assist user groups understand code compliance and the process as well as handle an increased work load as a result of a new plan review process
- To be a new leader and partner with senior administrators in establishing a new division
- Initiate and develop your ideas and those of staff members
- Interpret regulations, polices and apply standards to establish new procedures
- Work on UCONN 2000/21st Century capital improvements
- Address deferred maintenance projects which have been a low priority
- To become a first class organization – Center for Excellence
- To find the right people to improve services through increased staff
- Become a key player in a very dynamic organization
- Challenges of working with diverse types of buildings, infrastructure and various campuses



Compensation and Application Process

The starting salary for this position is negotiable depending on qualifications and experience. Salary range is set at **\$100,000 to \$120,000** with an excellent benefits package which includes:

- Various Health Insurance options (medical and dental) for employee and family
- Pension and Retirement plan options
- 12 paid holidays /year -15 paid sick days /year -22 paid vacation days / year - 1.5 personal days per year
- Tuition waivers for self and dependent children in programs at UCONN
- Tuition reimbursement provided for other accredited schools and colleges

For more information about UCONN or AES see following web sites:

www.uconn.edu <http://aes.uconn.edu/>

If you meet these qualification and want to be considered for this exceptional career opportunity at a top university, please mail or email immediately - a cover letter, resume, and three references to:

Ms. Randi Frank
Randi Frank Consulting, LLC
7 Promontory Drive
Wallingford, CT 06492
Phone: (203)284-3707
Email: rfrank05@snet.net

UCONN is an Equal Opportunity Employer and encourages women and minorities to apply.